



NORTHERN  
BEACHES  
& MOSMAN  
COLLEGE

# CAREERS & LIFESTYLE COURSE GUIDE 2021

JUL - SEP



**FEE FREE  
TRAINING**

**Skilling for Recovery  
(JobTrainer)**

Check the back page  
to see if you're eligible -  
you might be surprised!

**Don't miss out, ends  
30 September 2021**

**9970 1000 | [nbmc.nsw.edu.au](http://nbmc.nsw.edu.au)**

RTO ID 90113

## Contents

Business & Financial Services	3
Community Services, Assistant in Nursing, Leisure & Health, Counselling	4
Aged & Disability Care	5
Human Resources & Management	6
Early Childhood Education & Care	7
Fee Free Training	8
Workskills	9
Computers	10
Languages	12
Arts & Craft	13
Lifestyle	14
Locations	15
Short Course Enrolment Form	15

### HOW TO ENROL:

**Online:** nbmc.nsw.edu.au

**Phone:** 9970 1000

**In person:** NTH NARRABEEN - 1525 Pittwater Rd  
- Mon to Fri - 9am to 4.30pm  
BROOKVALE - L1, 14 William St  
- Mon to Thurs - 9am to 4pm

**By post:** See enrolment form on page 15

## About NBMC

Northern Beaches & Mosman College is the result of Northern Beaches and Mosman Community Colleges joining forces. We are now able to offer a wider range of accredited and lifestyle courses to the communities of both areas.

Further information about the College, funding opportunities for individuals and businesses and traineeships can be found on our website at: nbmc.nsw.edu.au or please phone us on 9970 1000.

### Registered Training Organisation

NBMC is a Registered Training Organisation (RTO) national code 90113. We are registered with the Australian Skills Quality Authority (ASQA) to deliver training, assess and issue Statements of Attainment and/or qualifications that appear on our scope of registration.

## USI Unique Student Identifier

All students enrolling in Nationally Recognised Training must obtain a Unique Student Identifier (USI) prior to course commencement. This includes full qualification & short accredited courses identified with the nationally recognised training logo. If you don't have a USI you will not receive your qualification or statement of attainment. For more information or to obtain a USI please go to: [www.usi.gov.au](http://www.usi.gov.au)



### KEEP UPDATED

Sign up to our newsletter for information on new courses and to see what's happening at NBMC.

To subscribe visit: [nbmc.nsw.edu.au](http://nbmc.nsw.edu.au)

## CHAT WITH A COORDINATOR

If you are interested in one of our many Certificate/ Diploma courses but are unsure which course is right for you our Coordinators are here to help. You can chat on the phone or call and book an appointment to chat face-to-face either at one of our offices or via zoom.



### Natalie Thornberry

- Early Childhood Education & Care
  - Human Resources
  - Leadership & Management
- [natalie@nbmc.nsw.edu.au](mailto:natalie@nbmc.nsw.edu.au)



### Nadia Louw

- Assistant in Nursing
  - Community Services
  - Leisure & Health
  - Counselling
- [nadia@nbmc.nsw.edu.au](mailto:nadia@nbmc.nsw.edu.au)



### Margaret Perusich

- Accounting & Bookkeeping
  - Entrepreneurship & New Business
- [margaretp@nbmc.nsw.edu.au](mailto:margaretp@nbmc.nsw.edu.au)



### Mairead O'Leary

- Aged & Disability Care
  - Business
  - Computer Programs
- [mairead@nbmc.nsw.edu.au](mailto:mairead@nbmc.nsw.edu.au)

## Accredited Training Explained

In Australia, we have three different levels of education:

- School (primary and secondary)
- VET (vocational education & training)
- University (higher education)



In VET, if a course is accredited, it means the course is nationally recognised and that a registered training organisation (RTO) can issue a nationally recognised VET qualification or VET statement of attainment following its full or partial completion. VET qualifications can be offered at different levels starting from Certificate I through to Advanced Diplomas. These are part of the Australian Qualifications Framework.

NBMC offers a range of full qualification and short courses which are identified with the above logo as they are "accredited".

The content of each accredited course is drawn from a Training Package which is a set of nationally endorsed standards and qualifications for recognising and assessing people's skills in a specific industry.

RTOs in NSW (this includes most Community Colleges, TAFEs and private RTOs) are registered with the Australian Skills Quality Authority (ASQA) to deliver training. To operate as an RTO we are all required to meet stringent standards and audited regularly by ASQA to ensure compliance with those standards.

## Recognition of Prior Learning

Your existing skills & knowledge can be recognised into either a part or full qualification. This relates only to qualifications which the College has within its scope of registration. Please contact the College for further information.

All information is considered correct at time of publication.



# Business & Financial Services

Limited  
classroom  
places available.  
Book now to  
avoid  
disappointment.

## BSB30115 Certificate III in BUSINESS

This qualification provides training in a range of essential administrative duties and computer skills suitable for any office environment.

**Career Options:** Administrative Assistant; Customer Service Assistant; Data Entry Operator; and many other general office roles.

**Cost:** From \$1320 or \$0 if eligible under Skilling for Recovery. (This training is subsidised by the NSW Government.)

DATES	TIME	LOCATION	NOTES
2 days per week - Wed & Thur 28 Jul to 9 Dec 21	9.30am - 2.30pm	Brookvale Campus	• Incl. flexible, weekly directed self-study hrs



**FOR MORE INFORMATION** on the above course or to book an appointment please contact: Mairead O'Leary on 9970 1000 or email: [mairead@nbmc.nsw.edu.au](mailto:mairead@nbmc.nsw.edu.au)

**FEE FREE SCHOLARSHIP** If you are **15-30 years old** and in receipt of a Commonwealth benefit, or a dependent of a Commonwealth Benefit recipient, you may be eligible for a **Fee Free Scholarship**. Other Fee Free opportunities available, see website. (Eligibility conditions apply).

## FNS40217 Certificate IV in ACCOUNTING & BOOKKEEPING

Do you want an accounting/bookkeeping career? This nationally recognised qualification is ideal for aspiring & practising bookkeepers or employees performing book-keeping tasks for organisations in a range of industries.

**Career Options:** Small Business Bookkeeper; BAS Agent; Contract or Staff Bookkeeper; Trainee Accountant

**Cost:** From \$1980 or \$240 if eligible for concession. (This training is subsidised by the NSW Government.)

DATES	TIME	LOCATION	NOTES
1 evening per week - Wed - 25 Aug 21 to 17 Aug 22 plus 9 Saturdays (9.30am to 3.30pm)	6.15pm to 9.15pm	Brookvale	• Incl. flexible, weekly directed self-study hrs

There is a prerequisite of basic bookkeeping and MYOB knowledge and experience.

## NEW BSB40320 - Certificate IV in ENTREPRENEURSHIP & NEW BUSINESS

Do you have a great idea for a new business or do you need to develop your skills for an existing business? This course will give you the practical understanding of what it takes to run a successful small business.

**Career Options:** Small Business Manager

**Cost:** From \$1580 or \$0 if eligible under Skilling for Recovery. (This training is subsidised by the NSW Government.)

DATES	TIME	LOCATION	NOTES
1 evening per week - Mon - 19 Jul 21 to 15 Aug 22 plus 7 Saturdays (9.30am to 3.30pm)	6.15pm to 9.15pm	Brookvale or Virtual Classroom	• Incl. flexible, weekly directed self-study hrs



**FOR MORE INFORMATION** on the above two courses or to book an appointment please contact: Margaret Perusich on 9970 1000 or email: [margaretp@nbmc.nsw.edu.au](mailto:margaretp@nbmc.nsw.edu.au)

**FLEXIBLE  
Payment Plans**

Available for full qualification courses. Pay by:

- Interest free payment plan, or
- Instalments

For full course details and eligible concessions go to:  
[nbmc.nsw.edu.au](http://nbmc.nsw.edu.au)



## COLLEGE OPEN DAY

Do you want to upgrade your skills, are you retraining for a new career or looking at improving your employment prospects, or need some clarification on fee free training? Why not drop into our Open Day and find out how NBMC can help you.

**TUESDAY 22 JUNE 2021**

**11am-2pm or 4pm-6.30pm**

**Brookvale - L1, 14 William Street**

# Assistant in Nursing, Leisure & Health, Community Services, Counselling

Limited classroom places available. Book now to avoid disappointment.

## HLT33115 Certificate III in HEALTH SERVICES ASSISTANCE

Gain the knowledge and skills as a Nursing Assistant in a hospital or other health care facility to work with health care professionals in delivering the highest level of care.

**Career Options:** Assistant in Nursing; Nursing Support Worker; Ward Person

**Cost:** From \$1600 or \$0 if eligible under Skilling for Recovery. (This training is subsidised by the NSW Government.)

DATES	TIME	LOCATION	NOTES
2 days per week - Thur & Fri 29 Jul to 17 Dec 2021	9am to 3pm	Narrabeen or Virtual Classroom	<ul style="list-style-type: none"> <li>Completion of 80 hrs work placement (organised by the College)</li> <li>Incl. flexible, weekly directed self-study hrs</li> <li>Additional First Aid Training day</li> </ul>
2 evenings per week - Mon & Wed 19 July to 15 Dec 2021	6.15pm to 9.15pm	Brookvale Campus	

Expand your employment opportunities!

Talk to us about completing these two courses concurrently.

## HLT33015 Certificate III in ALLIED HEALTH ASSISTANCE

This course is for the self-motivated individual who gets excited about assisting allied health professionals with therapy programs to improve a client's quality of life in settings such as private practices, aged care facilities & hospitals.

**Career Options:** Allied Health Assistant; Occupational Therapy Asst; Physiotherapist's Asst; Podiatrist's Asst; Medical Administration

**Cost:** From \$1450 or \$0 if eligible under Skilling for Recovery. (This training is subsidised by the NSW Government.)

DATES	TIME	LOCATION	NOTES
2 days per week - Thur & Fri 29 Jul to 17 Dec 2021	9am to 3pm	Narrabeen or Virtual Classroom	<ul style="list-style-type: none"> <li>Completion of 80 hrs work placement (Self arranged, with support from the College)</li> <li>Incl. flexible, weekly directed self-study hrs</li> <li>Additional First Aid Training day</li> </ul>
2 evenings per week - Mon & Wed 19 July to 15 Dec 2021	6.15pm to 9.15pm	Brookvale Campus	

**FEE FREE\*  
TRAINING**

This introductory course is available under the Skilling for Recovery (JobTrainer) scheme. It provides an introduction to a Certificate III course, and once successfully completed you will receive credits when enrolling in the full qualification). \*Eligibility conditions apply.



### SFR Introduction to Working in the Health Industry

The units in this introductory course are from **HLT33115 Certificate III in Health Services Assistance** / **HLT33015 Certificate III in Allied Health Assistance**.

**Units:** CHCCOM005 Communicate and work in health or community services; CHCDIV001 Work with diverse people; HLTWHS001 Participate in workplace health and safety

**Cost:** \$0 if eligible for ACE funding - see page 8/website for eligibility criteria

2 days per week - Thurs & Fri | 29 Jul to 13 Aug 21 | 9am to 3pm | Narrabeen Campus  
Incl. flexible, weekly directed self-study hours.

2 evenings per week - Mon & Wed | 19 Jul to 9 Aug 21 | 6.15pm to 9.15pm | Brookvale Campus  
Incl. flexible, weekly directed self-study hours.

This training is subsidised by the NSW Government.

## CHC43415 Certificate IV in LEISURE & HEALTH

Do you already work in the industry, and have a **Cert. III/IV in Ageing**, talk to us about credit transfers.

Are you energetic, compassionate & want to support the person-centred care activities in which clients in the aged care, health, & community services sectors take part? Learn how to plan, implement and monitor appropriate leisure activities or programs.

**Career Options:** Activities Officer; Diversional Therapy Assistant; Community Leisure Officer; Leisure Officer; Disability Officer - Day Support; Recreation Activities Officer

**Cost:** From \$1990 or \$0 if eligible under Skilling for Recovery. (This training is subsidised by the NSW Government.)

DATES	TIME	LOCATION	NOTES
New class commences Term 4.			

## CHC42015 Certificate IV in COMMUNITY SERVICES

Embrace a rewarding career in community services and help people in the community regain more control over their lives and future.

**Career Options:** Community Support Worker; Health Education Officer; Domestic Violence Officer; Youth Support Worker

**Cost:** From \$1990 or \$0 if eligible under Skilling for Recovery. (This training is subsidised by the NSW Government.)

DATES	TIME	LOCATION	NOTES
1 evening per week - Tue 20 Jul 2021 to 21 Jun 2022	6.15pm to 9.15pm	Brookvale, Mosman or Virtual Classroom	<ul style="list-style-type: none"> <li>Completion of min. 40 hrs work placement (self arranged, with support from the College)</li> <li>Incl. flexible, weekly directed self-study hrs</li> <li>If chosen as an elective, First Aid training is held on Fridays or Saturdays.</li> </ul>
1 evening per week - Wed 21 Jul 2021 to 22 Jun 2022	6.15pm to 9.15pm	Brookvale, Mosman or Virtual Classroom	

Gain the opportunity to work with clients in an entry level counselling role. Learning current and effective counselling techniques and methods, you will be able to give people the skills to overcome the personal or psychological problems they face, making a difference in their lives. At this level, you will be working in defined and supported counselling roles in established practice.

**Career Options:** Drug & Alcohol Counsellor; Child & Family Counsellor; Disability & Aged Care Counsellor ; Student Counsellor; Telephone Counsellor; Youth Counsellor; Suicide & Grief Counsellor; Career Counsellor; Domestic Violence Counsellor

**Cost:** From \$4420 or \$0 if eligible under Skilling for Recovery. (This training is subsidised by the NSW Government.)

DATES	TIME	LOCATION	NOTES
1 day per week - Tues 20 Jul 2021 to 19 Jul 2022	9am to 3pm	Narrabeen	<ul style="list-style-type: none"> <li>Completion of work placement may be required</li> <li>Incl. flexible, weekly directed self-study hrs</li> <li>Saturdays (9.30am to 3.30pm)</li> </ul>
1 evening per week - Tues 20 Jul 2021 to 19 Jul 2022 plus 4 Saturdays	6pm to 9pm	Mosman	
1 evening per week - Wed 21 Jul 2021 to 20 Jul 2022 plus 4 Saturdays	6pm to 9pm 6.15pm to 9.15pm	Narrabeen Brookvale	



**FOR MORE INFORMATION** on any of the courses on page 4, or the above course, or to book an appointment please contact:  
Nadia Louw on 9970 1008 or email: [nadia@nbmc.nsw.edu.au](mailto:nadia@nbmc.nsw.edu.au)

Note: If attending via **virtual classroom** some classroom attendance is required.  
Pre-requisites for Virtual Classroom study can be found at:  
[nbmc.nsw.edu.au](http://nbmc.nsw.edu.au)

## FLEXIBLE Payment Plans

Available for full qualification courses. Pay by:

- Interest free payment plan, or
- Instalments

For full course details and eligible concessions go to: [nbmc.nsw.edu.au](http://nbmc.nsw.edu.au)



## FEE FREE TRAINING

**Fee free\*** training may be available on courses with an **SFR** if you are:

- **Unemployed** (not a Commonwealth benefit recipient); **OR**
- **Commonwealth Benefit Recipient**; **OR**
- **At risk of unemployment** eg. Employed less than 6 months (see pg 8 for more options); **OR**
- **16-24 years of age** and left school (regardless of employment status)

\*Eligibility conditions apply.



# Aged & Disability Care

## CHC33015 Certificate III in INDIVIDUAL SUPPORT (Ageing, Home & Community or Disability)

Improve the quality of life of others as you start your career as a Care Worker. Find employment as a carer/support worker with a home care service provider and/or an aged care facility.

**Career Options:** Assistant in Nursing; Home Care Assistant; In-Home Respite Worker; Personal or Community Care Attendant; Support Service Worker

**Cost:** From \$1450 or \$0 if eligible under Skilling for Recovery. (This training is subsidised by the NSW Government.)

DAYS	TIME	LOCATION	NOTES
2 days per week - Wed & Thurs 21 Jul to 2 Dec 2021	9am to 3pm	Narrabeen	<ul style="list-style-type: none"> <li>Completion of 120 hrs work placement (organised by the College)</li> <li>Incl. flexible, weekly directed self-study hrs</li> </ul>
2 evenings per week - Mon & Wed 19 Jul to 15 Dec 2021	6.15pm to 9.15pm	Brookvale or Mosman	

## CHC43015 Certificate IV in AGEING SUPPORT (For Existing Workers)

Do you already work in the industry and have Certificate III in Individual Support or equivalent? This course offers more advanced skills to help you be more specialised and take on more responsibility. Talk to us about how easy it is to upskill from Certificate III to Certificate IV.

**Career Options:** Hostel Supervisor; Care Supervisor; Program Coordinator - Social Programs; Care Team Leader; Residential Care Worker; Client Liaison

**Cost:** From \$1990 or \$0 if eligible under Skilling for Recovery. Cost will reduce if credit transfer/RPL is successfully obtained. (This training is subsidised by the NSW Government.)

DATES	TIME	LOCATION	NOTES
1 evening per week - Wed 21 Jul 21 to 16 Mar 2022	6pm to 9pm	Narrabeen	<ul style="list-style-type: none"> <li>Completion of 120 hrs work placement (current work hours may be acceptable)</li> <li>Incl. flexible, weekly directed self-study hrs</li> <li>Additional First Aid Training day</li> </ul>



**FOR MORE INFORMATION** on the above two courses or to book an appointment please contact:  
Mairead O'Leary on 9970 1000 or email: [mairead@nbmc.nsw.edu.au](mailto:mairead@nbmc.nsw.edu.au)



# Human Resources & Management

Limited  
classroom  
places available.  
Book now to  
avoid  
disappointment.

## NEW BSB40420 Certificate IV in HUMAN RESOURCES

Would you like to work in human resource management across large, medium or small businesses? This course will prepare you for a variety of HR roles.

**Career Options:** HR/Recruitment Officer; Admin Officer; Executive PA; Office Administrator; Project Assistant

**Cost:** From \$1580 or \$0 if eligible under Skilling for Recovery. (This training is subsidised by the NSW Government.)

DATES	TIME	LOCATION	NOTES
1 evening per week - Wed plus 7 Saturdays (9.30am-3.30pm) 21 Jul 21 to 29 Jun 22	6.15pm to 9.15pm	Brookvale, Mosman or Virtual Classroom	• Incl. flexible, weekly directed self-study hrs

Note:

If attending via  
virtual classroom  
some classroom  
attendance may  
be required. Pre-  
requisites for Virtual  
Classroom study  
can be found at:  
[nbmc.nsw.edu.au](http://nbmc.nsw.edu.au)

## NEW BSB40520 Certificate IV in LEADERSHIP & MANAGEMENT

Do you have what it takes to be a manager or, are you already working as a manager or team leader but would like to formalise your skills and knowledge?

**Career Options:** Team Leader; Coordinator; Manager; Supervisor

**Cost:** From \$1580 or \$0 if eligible under Skilling for Recovery. (This training is subsidised by the NSW Government.)

DATES	TIME	LOCATION	NOTES
1 evening per week - Wed plus 4 Saturdays (9.30am-3.30pm) 21 Jul 21 to 29 Jun 22	6pm to 9pm	Narrabeen or Virtual Classroom	• Incl. flexible, weekly directed self-study hrs • Virtual students are required to attend face-to-face where Saturdays are scheduled.

## BSB50420 Diploma of LEADERSHIP & MANAGEMENT

This qualification, designed by industry professionals, will help to bring out your natural initiative, judgement and communication skills to support others, both individually and in teams, to successfully meet organisational needs.

**Career Options:** Manager across a range of enterprise and industry contexts.

**Cost:** From \$2530 or \$0 if eligible under Skilling for Recovery. (This training is subsidised by the NSW Government.)

DATES	TIME	LOCATION	NOTES
1 evening per week - Tues plus 5 Saturdays (9.30am-3.30pm) 13 Jul 21 to 28 Jun 22	6.15pm to 9.15pm	Brookvale or Virtual Classroom	• Incl. flexible, weekly directed self-study hrs • Virtual students are required to attend face-to-face where Saturdays are scheduled.
1 evening per week - Thur plus 5 Saturdays (9.30am-3.30pm) 15 Jul 21 to 30 Jun 22	6.15pm to 9.15pm	Brookvale or Virtual Classroom	



### FOR MORE INFORMATION

on any of these courses or to book  
an appointment please contact:  
Natalie Thornberry on 9970 1001 or  
email: [natalie@nbmc.nsw.edu.au](mailto:natalie@nbmc.nsw.edu.au)

For full course details and eligible  
\*concessions go to:  
[nbmc.nsw.edu.au](http://nbmc.nsw.edu.au)

### FEE FREE TRAINING - Skilling For Recovery (JobTrainer)

Fee free\* training may be available on courses with an  if you are:

- **Unemployed** (not a Commonwealth benefit recipient); **OR**
- **Commonwealth Benefit Recipient**; **OR**
- **At risk of unemployment** eg. Employed less than 6 months (see pg 8 for more options); **OR**
- **16-24 years of age** and left school (regardless of employment status)

\*Eligibility conditions apply.



### College Builds Confidence

"Returning to the workforce after taking time off with her two young children was something of a daunting prospect for Linda Moss from Avalon, but she says an HR qualification from Northern Beaches and Mosman College boosted her confidence and taught her new skills for her next career move...."

To read the remainder of Linda's story please head to our website via the QR code.



# Early Childhood Education & Care

## **CHC30113 Certificate III in EARLY CHILDHOOD EDUCATION & CARE**

This mixed mode learning course is the first step in your exciting new career as an early childhood educator. It is now mandatory to either have, or be actively working towards, this qualification if you want to work at an approved early childhood service.

**Career Options:** Early Childhood Educator; Childhood Educator Assistant; Nanny; Family Day Care Worker; Play Group Supervisor; Occasional Care Facilities; Crèches; Preschools

**Cost:** From \$1600 or \$0 if eligible under Skilling for Recovery. (This training is subsidised by the NSW Government.)

DATES	TIME	LOCATION	NOTES
2 days per week - Thur & Fri 22 Jul 2021 to 8 Apr 2022	9.15am to 2.45pm	Brookvale	<ul style="list-style-type: none"> <li>Min. 120 hrs work placement (8 hr days) - organised by the College</li> <li>Mandatory full day required for First Aid</li> <li>Incl. flexible, weekly directed self-study hrs</li> <li>Working with Children Check required</li> </ul>

## **CHC50113 Diploma of EARLY CHILDHOOD EDUCATION & CARE**

This is a great mixed mode learning course to choose if you not only want to join the childcare industry (and gain all the basic skills) but want the option later to advance your career.

**Career Options:** Early Childhood Educator; Centre Manager; Team Leader; Children's Services Coordinator; Child Development Worker

**Cost:** From \$4420 or \$0 if eligible under Skilling for Recovery. (This training is subsidised by the NSW Government.)

DATES	TIME	LOCATION	NOTES
Contact Natalie Thornberry for more information on 9970 1000.			

## **CHC50113 Diploma of EARLY CHILDHOOD EDUCATION & CARE (Existing Worker)**

If you already have your Cert III and want to expand your career potential then this specially designed course is for you. Prerequisite: CHC30113 Certificate III in Early Childhood Education & Care

**Career Options:** Early Childhood Educator; Centre Manager; Team Leader; Children's Services Coordinator; Child Development Worker

**Cost:** From \$3000 or \$0 if eligible under Skilling for Recovery. (This training is subsidised by the NSW Government.)

DATES	TIME	LOCATION	NOTES
1 evening per week - Tues plus 6 Saturdays (9.30am - 3.30pm) 20 Jul 2021 to 28 Jun 2022	6pm to 9pm	Narrabeen	<ul style="list-style-type: none"> <li>240 hours work placement (if not currently working in the industry)</li> <li>Mandatory full day required for First Aid</li> <li>Incl. flexible, weekly directed self-study hrs</li> <li>Working with Children Check required</li> </ul>
1 day per week - Thurs 19 Aug 2021 to 18 Aug 2022	9.15am to 2.45pm	Narrabeen	



### FOR MORE INFORMATION

on any of the above courses or to book an appointment please contact: Natalie Thornberry on 9970 1001 or email: [natalie@nbmc.nsw.edu.au](mailto:natalie@nbmc.nsw.edu.au)

### FLEXIBLE Payment Plans

Available for full qualification courses. Pay by:

- Interest free payment plan, or
- Instalments

For full course details and eligible concessions go to:

[nbmc.nsw.edu.au](http://nbmc.nsw.edu.au)



### Congratulations to:

Connie who successfully completed a Traineeship in CHC30113 Certificate III in Early Childhood Education & Care at the Owl & The Pussycat Preschool. She is pictured here with Sam (the owner).



Congratulations to Keryn who successfully completed CHC30113 Certificate III in Early Childhood Education & Care also at the Owl & The Pussycat Preschool.



**Now with new wage subsidies.**

## Fee Free Traineeships

**Do you need more staff? Talk to us about Fee Free Traineeships\* with new wage subsidies.**

Employees can "learn & earn" while employers gain skilled staff for their businesses, as well as financial incentives offered by the Government. Talk to us today to see how we can help you -

**9970 1000**

\* See website for trainee eligibility. This training is subsidised by the NSW Government.

# Funded Training

**NEW FUNDED  
TRAINING  
AVAILABLE.**

**See below to see if  
you are eligible.**

*\*Conditions Apply*

Did you know the NSW Government fully subsidises a variety of funded training, either short courses or Nationally Accredited Certificate/Diploma courses.

Why not check below to see if you meet the criteria.

## What type of funded training are you interested in?

✓ **SHORT COURSES**  
**Adult & Community Education (ACE)**

**Q1. Can you tick all four boxes below:**

- An Australian Citizen, or Permanent Resident, or NZ citizen, or Humanitarian visa holder, and
- Aged 15 years or older, and
- No longer at school, and
- Live or work in NSW

Yes
No

**Q2. Can you tick one of the options below?**

- Australian Aboriginal or Torres Strait Islander, or
- Someone with a disability or is the dependent child, spouse or partner of someone with a disability, or
- Someone who is experiencing hardship (letter needed from medical professional, government agency or support agency eg. your GP or Counsellor), or
- A recipient of an eligible benefit, or a dependent child, spouse or partner of a recipient of an eligible benefit.  
Eligible benefits are:
  - Age Pension
  - Austudy
  - Carer Payment\*
  - Disability Support Pension
  - Farm Household Allowance
  - Family Tax Benefit Part A (max. rate)
  - Jobseeker Payment
  - Parenting Payment (Single)
  - Special Benefit
  - Veterans' Affairs Pensions
  - Veterans' Children Education Scheme
  - Youth Allowance
  - Widow Allowance

Yes
No

**You are eligible for ACE funded training, you may also be eligible for courses with an SFR on pages 3 to 7.**

**Call Susan Wilkinson for more information, and an enrolment form, on 9970 1000**

*This training is subsidised by the NSW Government.*

**Unfortunately you are not eligible for ACE funded training.**

**Unfortunately you are not eligible for ACE funded training. However you may be eligible for SFR funded training.**

**Unfortunately you are not eligible for ACE funded training.**

**PART QUALS/CERTIFICATE/DIPLOMA COURSES**  
**NEW Skilling For Recovery (JobTrainer) SFR**

**Q1. Can you tick all four boxes below:**

- An Australian Citizen, or Permanent Resident, or NZ citizen, or Humanitarian visa holder, and
- Aged 15 years or older, and
- No longer at school, and
- Live or work in NSW

Yes
No

**Q2. Can you tick one of the options below?**

- Unemployed (not a Commonwealth Benefit recipient); or
- A Commonwealth Benefit Recipient; or
- 16-24 years of age and left school (regardless of employment status); or
- At risk of unemployment eg.
  - Employed but do not hold qualifications Cert III or above; or
  - Notice of Redundancy; or
  - Employed for 6 months or less

Yes
No

**Check pages 3 to 7 for courses with an SFR symbol.**

*This training is subsidised by the NSW Government.*

**Unfortunately you are not eligible for SFR funded training.**

**Unfortunately you are not eligible for SFR funded training.**



Meet the criteria in Q1 above but not Q2 and need an introductory computer skills course to help get a job or training? Go to pg 11 and check out:

**ICT10115 Certificate I in Information, Digital Media & Technology**

This **FREE FREE** course might be just right for you.

Check website for latest information on funded training for small business under the Tech Savvy for Small Business program.

For more information on funded positions please contact Susan Wilkinson on 9970 1000 or email [vet@nbmc.nsw.edu.au](mailto:vet@nbmc.nsw.edu.au)



COURSE	COST	DATE	SESSIONS	TIME	TRAINER	LOCATION
<b>Business &amp; Money Matters</b>						
Import /Export Workshop <i>*Cost of manual included</i>	\$192* gst exempt	Sat 21 Aug	1	9.00am - 5.00pm	Corinne Campbell	Brookvale Campus/ Virtual Classroom
Living In A Strata Scheme Building	\$99 inc gst	Thurs 26 Aug	1	6.00pm - 8.00pm	Paul Miller	Mosman Campus
Radio Workshop	\$140 gst exempt	Sat 17 July	1	9.00am - 4.00pm	Andrew Goodman Jones	Radio Northern Beaches
	\$140 gst exempt	Sat 11 Sept	1	9.00am - 4.00pm	Andrew Goodman Jones	Radio Northern Beaches

## Workskills

✔ SFR Introduction to Working in the Health Industry	See page 4 for details					
✔ SFR Medical Terminology	\$139 gst exempt	Thur 19 Aug & Fri 20 Aug	2	9.00am - 3.00pm	Jo Neophyton	Narrabeen or Virtual Classroom
	\$119 gst exempt	Mon 9 Aug & Wed 11 Aug	2	6.15pm - 9.15pm	TBA	Brookvale Campus
BSBMED301 Interpret and apply medical terminology appropriately						
✔ Customer Service Skills	\$219 gst exempt	Thurs 12 Aug	3	9.30am - 2.30pm	Helen Thornton	Brookvale Campus
BSBCUS301 Deliver and monitor a service to customers						
✔ Emotional Intelligence	\$278 gst exempt	Thur 5 Aug & 19 Aug	2	9.30am - 4.30pm	Margaret Delloso	Mosman Campus
BSBPEF502 Develop and use emotional intelligence						

## Job Seeking Skills

Introduction to LinkedIn	\$94 gst exempt	Thurs 2 Sep	2	6.15pm - 9.15pm	Maxine Haigh-White	Brookvale Campus
--------------------------	-----------------	-------------	---	-----------------	--------------------	------------------

## First Aid

✔ HLTAID001 Provide Cardiopulmonary Resuscitation	\$65 gst exempt	See website for course dates	1	9.00am - 12.30pm	• Pre-course work required • Practical demonstration of CPR on a manikin on the floor is a requirement
✔ HLTAID003 Provide First Aid	\$130 gst exempt	See website for course dates	1	9.00am - 5.00pm	• Pre-course work required • Practical demonstration of CPR on a manikin on the floor is a requirement
✔ HLTAID004 Provide an Emergency Response in an Education & Care Setting	\$140 gst exempt	See website for course dates	1	9.00am - 5.00pm	• Pre-course work required • Practical demonstration of CPR on a manikin on the floor is a requirement



**FEE FREE TRAINING**

**Workskills  
Courses**

Check website  
as updated  
regularly.



This training is subsidised by the NSW Government.

**Do computers really confuse you? Not sure how to even turn one on? Then this course could be for you.**

### Basic Computer Skills incl. myGov

1 day per week - Wed - 6 sessions | 28 Jul - 1 Sep | 9.30am - 2.30pm  
Brookvale, L1/14 William Street

**Cost: \$0** if eligible for ACE funded training

This course covers the very basics including:

- How to navigate around a computer
- How to search the internet
- How to use myGov

Numbers in the class are kept low, which enables the trainer to spend quality time with students.

Enrolment can be made: at the College, by application on the internet (maybe a friend can help), or call in to our Enrolment Session scheduled for:

**Wed 14 July 2021 | 9.30am-11am**  
**L1/14 William Street, Brookvale**

The course is fully funded however you do need to meet the Adult & Community Education (ACE) funding criteria on page 8 (the green boxes).

**For more information please contact Susan Wilkinson on 9970 1000 or email [vet@nbmc.nsw.edu.au](mailto:vet@nbmc.nsw.edu.au)**

**FUNDED COURSES AVAILABLE** Courses that display the green tick ✔ are available for funded positions and may be subsidised by the NSW Government, subject to eligibility. See page 8 for eligibility criteria.

✔ Courses displaying this symbol are Accredited and include assessments.

**For detailed information on our courses, including all materials lists and pre-requisites for studying via Virtual Classroom, visit: [nbmc.nsw.edu.au](http://nbmc.nsw.edu.au)**

# Computers

COURSE	COST	DATE	SESSIONS	TIME	TRAINER	LOCATION
--------	------	------	----------	------	---------	----------

## Computers for Over 60s

**Under 60s can attend at an additional 10% per course.** When enrolling in courses in this section you must quote your NSW Seniors Card or Pension number on enrolment. There are no further concessions on these courses.

### Communication & Online

Introduction to Online Shopping	\$55 gst exempt	Thur 22 Jul	1	10.00am - 1.00pm	Gabrielle Kinghorn	Narrabeen Campus
<b>NEW</b> Grocery Shopping Online at Woollies	\$67 gst exempt	Thur 29 Jul	1	9.30am - 1.30pm	Gabrielle Kinghorn	Narrabeen Campus
Introduction to Tablets: iPads	\$58 gst exempt	Wed 21 Jul	1	10.00am - 1.30pm	Laurel Trim	Narrabeen Campus
<b>NEW</b> Stay In Touch with Family & Friends Using Zoom - 1st Session: Narrabeen Campus, 2nd session: Zoom	\$67 gst exempt	Thur 5 Aug	2	10.00am - 12.00pm	Gabrielle Kinghorn	Narrabeen Campus & Zoom
Introduction to Facebook	\$99 gst exempt	Thur 19 Aug	2	10.00am - 1.00pm	Gabrielle Kinghorn	Narrabeen Campus
<b>NEW</b> Grocery Shopping Online at Coles	\$67 gst exempt	Thur 2 Sep	1	9.30am - 1.30pm	Gabrielle Kinghorn	Narrabeen Campus
Introduction to Instagram	\$99 gst exempt	Thur 9 Sep	2	10.00am - 1.00pm	Gabrielle Kinghorn	Narrabeen Campus
<b>NEW</b> iPhone Photography for Seniors	\$55 gst exempt	Tues 27 Jul	2	9.30am - 12.30pm	Sarah Lorient	Narrabeen Campus

### Computers

<b>NEW</b> Introduction to Windows, Word, Internet & Email	<b>SPECIAL PRICE</b> Usually \$398 \$320 gst exempt	Wed 28 Jul	6	9.30am - 1.30pm	Laurel Trim	Narrabeen Campus
Seniors Introduction to Windows 10	\$133 gst exempt	Wed 28 Jul	2	9.30am - 1.30pm	Laurel Trim	Narrabeen Campus
Seniors Organise Your Files & Photos	\$67 gst exempt	Wed 11 Aug	1	9.30am - 1.30pm	Laurel Trim	Narrabeen Campus
<b>NEW</b> Introduction to Internet & Email	\$133 gst exempt	Wed 18 Aug	2	9.30am - 1.30pm	Laurel Trim	Narrabeen Campus
<b>NEW</b> Introduction to Word	\$67 gst exempt	Wed 1 Sep	1	9.30am - 1.30pm	Laurel Trim	Narrabeen Campus
Photo Management	\$84 gst exempt	Thurs 22 Jul	1	9.30am - 2.30pm	Margaret Delloso	Mosman Campus

Using iPhone or iPad with Windows computers. Not suitable for Mac computer users and/or Android users.

## Microsoft Office

### Word

Word 2019 Introduction	\$344 gst exempt	Wed 11 Aug	3	9.30am - 2.30pm	Nicky Bull	Brookvale Campus
<i>BSBITU211 Produce digital text documents. Manual/notes provided. Prerequisite: Confident keyboarding and basic Windows PC &amp; file management skills.</i>						
Word 2019 Just The Basics	\$174 gst exempt	Mon 23 Aug	1	9.30am - 4.30pm	Gabrielle Kinghorn	Brookvale Campus
<i>FSKDIG01 Use digital technology for basic workplace tasks. Manual/notes provided. Prerequisite: Confident keyboarding and basic Windows PC &amp; file management skills.</i>						
Word 2019 Intermediate	\$344 gst exempt	Mon 30 Aug	3	9.30am - 2.30pm	Nicky Bull	Brookvale Campus
<i>BSBITU313 Design and produce digital text documents. Manual/notes provided. Prerequisite: Confident keyboarding and basic Windows PC &amp; file management skills.</i>						

### Excel

Excel 2019 Just The Basics	\$174 gst exempt	Mon 19 Jul	1	9.30am - 4.30pm	Nicky Bull	Brookvale Campus
<i>FSKDIG02 Use digital technology for simple workplace tasks. Manual/notes provided. Prerequisite: Confident keyboarding and basic Windows PC &amp; file management skills.</i>						
Excel 2019 Introduction	\$344 gst exempt	Tue 20 Jul	5	6.00pm - 9.00pm	Vera Hannan	Narrabeen Campus
	\$344 gst exempt	Wed 1 Sep	3	9.30am - 2.30pm	Nicky Bull	Brookvale Campus
<i>BSBITU314 Design &amp; produce spreadsheets. Manual/notes provided. Prerequisite: Confident keyboarding and basic Windows PC &amp; file management skills.</i>						
Excel 2019 Intermediate	\$155 gst exempt	Mon 26 Jul	1	9.30am - 4.30pm	Nicky Bull	Brookvale Campus
	\$136 gst exempt	Tues 3 Aug	2	6.15pm - 9.15pm	Nicky Bull	Brookvale Campus
<i>Manual/notes provided. Prerequisite: Confident keyboarding skills and Excel Introduction course or equivalent skills/knowledge.</i>						
Excel 2019 Advanced	\$155 gst exempt	Mon 2 Aug	1	9.30am - 4.30pm	Nicky Bull	Brookvale Campus
	\$136 gst exempt	Tues 24 Aug	2	6.15pm - 9.15pm	Nicky Bull	Brookvale Campus
<i>Manual/notes provided. Prerequisite: Confident keyboarding skills and Excel Intermediate course or equivalent skills/knowledge.</i>						
<b>NEW</b> Excel 2019 Powerful New Features	\$155 gst exempt	Mon 9 Aug	1	9.30am - 4.30pm	Nicky Bull	Brookvale Campus
	\$136 gst exempt	Tue 7 Sep	2	6.15pm - 9.15pm	Nicky Bull	Brookvale Campus
Intro to MS Power BI - Self Service Business Intelligence	\$155 gst exempt	Mon 16 Aug	1	9.30am - 4.30pm	Nicky Bull	Brookvale Campus
Excel 2019 Pivot Tables	\$79 gst exempt	Tue 17 Aug	1	6.15pm - 9.15pm	Nicky Bull	Brookvale Campus

**FUNDED COURSES AVAILABLE** Courses that display a green tick are available for funded positions and may be subsidised by the NSW Government, subject to eligibility. See page 8 for eligibility criteria.

Courses displaying this symbol are Accredited and include assessments.

For full course details see our website:  
**[nbmc.nsw.edu.au](http://nbmc.nsw.edu.au)**



COURSE	COST	DATE	SESSIONS	TIME	TRAINER	LOCATION
--------	------	------	----------	------	---------	----------

## PowerPoint

✓  PowerPoint 2019 Introduction	\$344 gst exempt	Mon 26 Jul	3	9.30am - 2.30pm	Gabrielle Kinghorn	Brookvale Campus
BSBITU312 Create electronic presentations. Manual/notes provided. Prerequisite: Confident keyboarding and basic Windows PC & file management skills.						
✓  PowerPoint 2019 Just The Basics	\$174 gst exempt	Tues 14 Sep	1	9.30am - 4.30pm	Gabrielle Kinghorn	Brookvale Campus
FSKDIG03 Use digital technology for routine workplace tasks. Manual/notes provided. Prerequisite: Confident keyboarding and basic Windows PC & file management skills.						
Make Your PowerPoints Pop	\$155 gst exempt	Tues 20 Jul	2	6.15pm - 9.15pm	Nicky Bull	Brookvale Campus
Manual/notes provided. Prerequisite: Confident keyboarding and basic Windows PC, file management & PowerPoint skills.						

## Outlook

✓  Introduction to Outlook 2019 - Email, Contacts & Calendar	\$237 gst exempt	Tues 20 Jul	2	9.30am - 2.30pm	Gabrielle Kinghorn	Brookvale Campus
ICTICT107 Use personal productivity tools. . Manual/notes provided. Prerequisite: Confident keyboarding skills.						

## Office Skills

✓  Touch Typing for Adults	\$280 gst exempt	Tues 3 Aug	6	9.30am - 11.30am	Gabrielle Kinghorn	Brookvale Campus
FSKDIG03 Use digital technology for routine workplace tasks. Prerequisite: Basic internet, keyboard and mouse skills.						
Touch Typing for 12-16 Year Olds	\$120 inc gst	Tues 6 & Wed 7 Jul	2	1.00pm - 4.00pm	Margaret Dellosa	Brookvale Campus
Windows 10 Tips & Tricks	\$65 gst exempt	Wed 8 Sep	1	9.30am - 12.30pm	Laurel Trim	Narrabeen Campus

## Bookkeeping & Accounting


✓  Basic Bookkeeping & MYOB	<b>SPECIAL PRICE</b> \$699* gst exempt	Thur 29 Jul	8	9.30am - 2.30pm	Judy Thomas	Brookvale Campus
	\$525* gst exempt	Mon 19 Jul	9	6.15pm - 9.15pm	TBA	Brookvale Campus
BSBFIA301 Maintain financial records & BSBFIA302 Process payroll. Prerequisite: Strong file management skills using Windows PC (NB: MYOB is now only available for Windows PCs), confident keyboarding skills. A trial version of MYOB will be downloaded during the first session. Additional self study required. *Cost includes manuals and resources						
Xero for Beginners	\$229 gst exempt	Sat 4 Sep	2	9.30am - 3.00pm	Maxine Haigh-White	Brookvale Campus

Manual/notes provided. Prerequisite: Strong file management skills using Windows PC & basic internet skills. Prior to the first class all students must have set up their own access to Xero with access to authenticator (instructions for creating your free Xero account will be emailed prior to course commencing). Students must have a smart phone in class to access the authenticator. Laptop provided for classroom use, or bring your own - free WiFi.

## Social Media - See website for current classes - [www.nbmc.nsw.edu.au](http://www.nbmc.nsw.edu.au)

## Adobe Graphic Design

✓  Photoshop CC Level 1	<b>SPECIAL PRICE</b> \$429 gst exempt	Tues 20 Jul	7	6.15pm - 9.15pm	Sarah Lorien	Brookvale Campus
ICTICT204 Operate a digital media technology package. Manual/notes provided. Prerequisite: Confident user of Windows or Mac, good Windows file management skills.						
✓  InDesign CC Level 1	<b>SPECIAL PRICE</b> \$429 gst exempt	Wed 28 Jul	7	6.15pm - 9.15pm	Deborah Stokes	Brookvale Campus
BSBITU309 Produce desktop published documents. Manual/notes provided. Prerequisite: Confident user of Windows or Mac, good Windows file management skills.						
After Effects CC Introduction	\$302 gst exempt	Fri 13 Aug	5	10.00am - 1.00pm	Deborah Stokes	Brookvale Campus
Prerequisite: Confident user of Windows or Mac, good Windows file management skills.						
✓  Illustrator CC Level 1	\$380 gst exempt	Mon 26 Jul	6	6.15pm - 9.15pm	Deborah Stokes	Brookvale Campus
ICTICT204 Operate a digital media technology package. Manual/notes provided. Prerequisite: Confident user of Windows or Mac, good Windows file management skills.						
Photoshop CC Introduction	\$210 gst exempt	Tues 20 Jul	3	6.15pm - 9.15pm	Sarah Lorien	Brookvale Campus
Manual/notes provided. Prerequisite: Confident user of Windows or Mac, good Windows file management skills.						
Photoshop CC Level 2	\$173 gst exempt	Tues 10 Aug	2	10.00am - 2.00pm	Sarah Lorien	Brookvale Campus
Manual/notes provided. Prerequisite: Confident user of Windows or Mac, good Windows file management skills.						
<b>NEW</b> Acrobat DC Introduction	\$173 gst exempt	Mon 30 Aug	2	9.30am - 1.30pm	Deborah Stokes	Brookvale Campus



## FEE FREE - Introductory Computer Skills Course

### ICT10115 Certificate I in Information, Digital Media & Technology

**This course is suitable for students who need basic Windows, Word, Excel, PowerPoint and Outlook skills to help them in the workplace or to enrol in further training.**

☐ An Australian Citizen/  
Permanent Resident /NZ  
citizen/Humanitarian visa  
holder
 ☐ Aged 15 years or older  
☐ No longer at school  
☐ Live or work in NSW

Talk to us about enrolling in this **fully funded** computer course. Not only will you be able to upgrade your skills, once completed, you will have a nationally recognised VET Accredited Certificate to add to your resumé.

**Cost: \$0** (if eligible for funded position).  
This training is subsidised by the NSW Government.

Mon & Wed | 6.00pm to 9.00pm  
26 Jul to 8 Nov 21 | Narrabeen  
NB: No classes Mon 9 & 23 Aug

Wed & Fri | 9.30am to 2.30pm  
21 Jul to 13 Oct 21 | Mosman  
NB: No class Fri 17 Sep

Mon & Tues | 9.30am to 2.30pm  
30 Aug to 22 Nov 21 | Narrabeen

Flexible, weekly directed self-study hours required.

For more information, and an enrolment form, call  
**Susan Wilkinson on 9970 1000** or  
email: [vet@nbmc.nsw.edu.au](mailto:vet@nbmc.nsw.edu.au).



## Travellers Stage 1

For students with little or no knowledge of the language. Designed for travel use.

## Travellers Stage 2

Continuation from Stage 1.

## Beginners Stages 1, 2, 3, 4

(Duration of each Stage is one term) - For students who wish to learn the language more comprehensively over a year. Enrolment is term by term.

## Intermediate Stages 1, 2, 3, 4

(Duration of each Stage is one term) - Designed for students who have completed the equivalent of one year of language. Continuation of grammar, vocabulary and conversation. Enrolment is term by term.

## Advanced Conversation

For students who can interact with a good degree of fluency. Emphasis is on conversation.

Please visit the website for more detailed information on the different levels and to check which course is most appropriate for your needs. Purchase of a textbook may be required (approx \$60).

COURSE	COST	DATE	SESSIONS	TIME	TRAINER	LOCATION
<b>French</b>						
French Travellers Stage 1	\$304 inc gst	Mon 19 July	8	6.30pm - 8.30pm	Steve Cornelius	Brookvale Campus
	\$304 inc gst	Thurs 22 July	8	11.30am - 1.30pm	Steve Cornelius	Narrabeen Campus
French Travellers Stage 2	\$304 inc gst	Thurs 22 July	8	9.30am - 11.30am	Steve Cornelius	Narrabeen Campus
French Beginners Stage 2	\$304 inc gst	Wed 21 July	8	12.30pm - 2.30pm	Dominique Partridge	St Lukes Mosman
French Beginners Stage 4	\$304 inc gst	Mon 19 July	8	2.00pm - 4.00pm	Dominique Partridge	St Lukes Mosman/ Virtual Classroom
French Beginners Stage 1	\$304 inc gst	Mon 19 July	8	3.00pm - 5.00pm	Nicole Laugier	Mosman Campus
French Beginners Stage 4	\$304 inc gst	Mon 19 July	8	6.00pm - 8.00pm	Nicole Laugier	Mosman Campus
French Intermediate Stage 2	\$304 inc gst	Wed 21 July	8	3.00pm - 5.00pm	Dominique Partridge	St Lukes Mosman/ Virtual Classroom
French Intermediate Stage 4 Conversation	\$295 inc gst	Tues 20 July	8	6.00pm - 8.00pm	Kathleen Beaubois	Virtual Classroom
French Intermediate Stage 4	\$304 inc gst	Tues 20 July	8	12.30pm - 2.30pm	Nicole Laugier	Cammeray Golf Club
French Advanced Conversation	\$455 inc gst	Tues 20 July	8	9.30am - 12.00pm	Nicole Laugier	Cammeray Golf Club

## German

German Travellers Stage 1	\$304 inc gst	Thurs 22 July	8	6.30pm - 8.30pm	Wolfgang Mueller	Brookvale Campus
---------------------------	---------------	---------------	---	-----------------	------------------	------------------

## Italian

Italian Travellers Stage 1	\$304 inc gst	Mon 19 July	8	7.00pm - 9.00pm	Francesca Modica	Brookvale Campus
Italian Travellers Stage 1	\$304 inc gst	Wed 21 July	8	10.00am - 12.00pm	Flavia Natoli	Brookvale Campus
Italian Travellers Stage 2	\$304 inc gst	Wed 21 July	8	12.30pm - 2.30pm	Flavia Natoli	Brookvale Campus
Italian Beginners Stage 1	\$304 inc gst	Fri 23 July	8	4.00pm - 6.00pm	Rosa Santi	Mosman Campus
Italian Beginners Stage 3	\$216 inc gst	Wed 21 July	8	3.30pm - 5.00pm	Rosa Santi	Mosman Campus
Italian Beginners Stage 4	\$206 inc gst	Thurs 22 July	8	7.30pm - 9.00pm	Rosa Santi	Virtual Classroom

## Mandarin

Mandarin Travellers Stage 1	\$304 inc gst	Mon 19 July	8	6.30pm - 8.30pm	Linda Bennett	Narrabeen Campus
Mandarin Travellers Stage 1	\$295 inc gst	Thurs 22 July	8	6.30pm - 8.30pm	Lillian Hong	Virtual Classroom

## Spanish

Spanish Travellers Stage 1	\$304 inc gst	Mon 19 July	8	7.30pm - 9.30pm	Patricia La Porta	Brookvale Campus
Spanish Travellers Stage 1	\$304 inc gst	Tues 20 July	8	10.00am - 12.00pm	Patricia La Porta	Brookvale Campus
Spanish Travellers Stage 2	\$304 inc gst	Mon 19 July	8	5.30pm - 7.30pm	Patricia La Porta	Brookvale Campus
Spanish Beginners Stage 1	\$304 inc gst	Tues 20 July	8	2.00pm - 4.00pm	Elizabeth Holgado-Vente	St Lukes Mosman
Spanish Beginners Stage 1	\$304 inc gst	Tues 20 July	8	6.00pm - 8.00pm	Carolina Delfino	Mosman Campus
Spanish Advanced Conversation	\$304 inc gst	Tues 20 July	8	12.00pm - 2.00pm	Elizabeth Holgado-Vente	St Lukes Mosman

For detailed information on our courses, including all materials lists and pre-requisites for studying via Virtual Classroom, visit:  
[nbmc.nsw.edu.au](http://nbmc.nsw.edu.au)



COURSE	COST	DATE	SESSIONS	TIME	TRAINER	LOCATION
<b>Drawing &amp; Painting</b>						
Drawing for Beginners	\$284 inc gst	Mon 19 July	8	6.30pm - 8.30pm	Mark Kingston	Narrabeen Campus
Drawing: Beginners to Intermediate	\$284 inc gst	Mon 19 July	8	12.00pm - 2.00pm	John Wells	Narrabeen Campus
Drawing for Intermediate	\$284 inc gst	Tues 20 July	8	6.30pm - 8.30pm	Mark Kingston	Narrabeen Campus
Introduction to Drawing & Painting	\$284 inc gst	Mon 19 July	8	7.00pm - 9.00pm	David Pavich	St Lukes Mosman
Intro to Drawing & Painting One Day Workshop	\$106 inc gst	Sat 31 July	1	10.00am - 4.00pm	David Pavich	St Lukes Mosman
Drawing for Beginners - Weekend Workshop	\$213 inc gst	Sat 24 & Sun 25 July	2	9.00am - 3.00pm	John Wells	St Lukes Mosman
<b>NEW</b> Drawing for Beginners	\$284 inc gst	Thurs 22 July	8	9.15am - 11.15am	John Wells	Mosman Campus
Drawing With Pen & Wash	\$284 inc gst	Thurs 22 July	8	10.30am - 12.30pm	Susan Bernasconi	St Lukes Mosman
<b>NEW</b> Drawing with Vincent: One day Workshop	\$89 inc gst	Sat 07 Aug	1	11.00am - 4.00pm	Susan Bernasconi	St Lukes Mosman
Oil Painting	\$270 inc gst	Thurs 22 July	6	6.15pm - 8.45pm	Mark Kingston	Narrabeen Campus
Watercolour: Beginners	\$347 inc gst	Tues 13 July	9	9.30am - 12.00pm	John Wells	Narrabeen Campus
Watercolour: Intermediate	\$309 inc gst	Tues 20 July	8	9.30am - 12.00pm	John Wells	Narrabeen Campus
Watercolour for Beginners Weekend Workshop	\$213 inc gst	Sat 04 & Sun 05 Sept	2	10.00am - 4.00pm	John Wells	St Lukes Mosman
Watercolour: Intermediate	\$309 inc gst	Mon 19 July	8	9.15am - 11.45am	John Wells	Narrabeen Campus
Ways With Watercolour	\$284 inc gst	Fri 23 July	8	10.30am - 12.30pm	Susan Bernasconi	St Lukes Mosman

## Home, Garden & Crafts

Absolutely Fabulous Personal Style	\$230 inc gst	Sat 31 July	1	10.00am - 2.30pm	Sharron Del Wakely	Mosman Campus
Absolutely Fabulous Colour Analysis	\$230 inc gst	Sat 28 Aug	1	10.00am - 2.30pm	Sharron Del Wakely	Mosman Campus
Backyard Beekeeping	\$129 inc gst	Sat 17 July	1	10.00am - 4.00pm	Judith Sleijpen	St Lukes Mosman
Bonsai for Beginners	\$129 inc gst	Sun 18 July	1	10.00am - 4.00pm	Judith Sleijpen	Mosman Campus
Clever Granny Squares	\$142 inc gst	Thurs 12 Aug	4	6.30pm - 8.30pm	Payal Bhargava	Brookvale Campus
	\$142 inc gst	Sun 25 Jul	4	9.30am - 11.30am	Payal Bhargava	Mosman Campus
Crochet: Beginners Stage 1	\$71 inc gst	Sat 17 July	1	9.00am - 1.00pm	Marianne Horton	Mosman Campus
	\$71 inc gst	Sun 22 Aug	1	9.00am - 1.00pm	Marianne Horton	Brookvale Campus
Garden Design in Small and Large Spaces	\$129 inc gst	Sat 29 Aug	1	10.00am - 4.00pm	Judith Sleijpen	St Lukes Mosman
General Sewing	\$284 inc gst	Tues 20 July	8	6.30pm - 8.30pm	TBA	St Lukes Mosman
	\$284 inc gst	Wed 21 July	8	6.30pm - 8.30pm	TBA	Narrabeen Campus
<b>NEW</b> Healthy Home	\$55 inc gst	Sat 7 Aug	1	9.30am - 12.30pm	Kathryn Glendenning	Mosman Campus
Interior Design - Basics	\$355 inc gst	Wed 21 July	8	9.15am - 11.45am	Fiona Barry	St Lukes Mosman
Interior Design - Intermediate	\$355 inc gst	Wed 21 July	8	6.30pm - 9.00pm	Fiona Barry	Brookvale Campus
<i>Prerequisite Interior Design Basics or equivalent</i>	\$355 inc gst	Tues 20 July	8	9.15am - 11.45am	Fiona Barry	St Lukes Mosman
Introduction to Gardening	\$119 inc gst	Sat 21 Aug	1	9.30am - 3.30pm	Cameron Graves	Brookvale Campus
Knitting for Beginners	\$71 inc gst	Sun 15 Aug	1	9.00am - 1.00pm	Marianne Horton	Brookvale Campus
Plant Propagation	\$129 inc gst	Sun 22 Aug	1	10.00am - 4.00pm	Judith Sleijpen	St Lukes Mosman
Pottery on the Wheel	\$413 inc gst	Wed 14 July	8	6.00pm - 8.30pm	Caitlin Robinson	Tramshed Narrabeen
Pottery (Handbuilding & Beginners Wheel)	\$413 inc gst	Tues 20 July	8	6.30pm - 9.00pm	TBA	Forestville Arts Ctre
	\$413 inc gst	Thurs 22 July	8	6.30pm - 9.00pm		Forestville Arts Ctre
Property Styling for Living or Selling	\$130 inc gst	Sat 21 Aug	1	9.30am - 4.30pm	Fiona Barry	St Lukes Mosman
Transform Your Furniture with Chalk Finish Paint	\$130 inc gst	Fri 27 Aug	1	9.30am - 3.30pm	Sarah Macaulay	Narrabeen Campus
Tunisian Crochet - Beginners	\$133 inc gst	Thurs 22 July	3	6.15pm - 8.45pm	Payal Bhargava	Brookvale Campus

For detailed information on our courses, including all materials lists and pre-requisites for studying via Virtual Classroom, visit:  
**[nbmc.nsw.edu.au](http://nbmc.nsw.edu.au)**

## Music & Singing

African Drumming Workshop	\$99 inc gst	Sat 28 Aug	1	9.00am - 1.00pm	Sal Salem	Narrabeen Campus
An Introduction to the Harp	\$75 inc gst	Wed 18 Aug	1	6.15pm - 8.45pm	Louise Johnson	Narrabeen Campus
Guitar: Beginners Level 1	\$142 inc gst	Wed 21 July	8	6.00pm - 7.00pm	Mark Broughton	Narrabeen Campus
	\$142 inc gst	Fri 23 July	8	6.00pm - 7.00pm	Brenton White	St Lukes Mosman
Guitar: Beginners Level 2	\$142 inc gst	Wed 21 July	8	7.00pm - 8.00pm	Mark Broughton	Narrabeen Campus
	\$142 inc gst	Thurs 22 July	8	7.30pm - 8.30pm	Brenton White	St Lukes Mosman
The Ukulele	\$106 inc gst	Wed 21 July	6	8.00pm - 9.00pm	Mark Broughton	Narrabeen Campus
	\$106 inc gst	Fri 23 July	6	7.00pm - 8.00pm	Brenton White	St Lukes Mosman

## Photography

Digital SLR Photography Introduction	\$310 inc gst	Mon 19 July	7	6.30pm - 9.00pm	Julie Crespel	Brookvale Campus
	\$320 inc gst	Fri 23 July	6	10.00am - 1.00pm	Julie Crespel	Narrabeen Campus
iPhone Photography	\$99 inc gst	Sat 21 Aug	1	10.00am - 3.00pm	Sarah Lorient	Mosman Campus
	\$99 inc gst	Wed 28 July	2	6.00pm - 8.30pm	Sarah Lorient	Narrabeen Campus
Portrait Photography Workshop	\$50 inc gst	Mon 6 Sep	1	6.30pm - 9.00pm	Julie Crespel	Brookvale Campus

Sunrise Photography Workshop - Julie Crespel - see website for details.

SHORT  
COURSES

## Lifestyle

COURSE	COST	DATE	SESSIONS	TIME	TRAINER	LOCATION
<b>Life Skills</b>						
Introduction to Blogging	\$50 inc gst	Wed 21 July	1	6.30pm - 8.30pm	Alexandra Vanags	Brookvale Campus
	\$50 inc gst	Wed 28 July	1	6.30pm - 8.30pm	Alexandra Vanags	Virtual Classroom
<b>NEW</b> Blogging Bootcamp	\$50 inc gst	Wed 11 Aug	1	6.30pm - 8.30pm	Alexandra Vanags	Brookvale Campus
Book Group - Reading For Pleasure (Existing Members Only)	\$177 inc gst	Tues 20 July	8	10.00am - 11.30am	Margaret Baird	Mosman Campus
Book Group - Reading For Pleasure (New Members)	\$155 inc gst	Tues 20 July	7	12.30pm - 2.00pm	Margaret Baird	Mosman Campus
<b>NEW</b> Focus Techniques	\$105 inc gst	Sat 04 Sep	1	10.00am - 4.00pm	Moneir Saidden	Mosman Campus
Short Story Writing	\$142 inc gst	Thurs 22 July	4	6.30pm - 8.30pm	Elaine Collins	Mosman Campus
	\$142 inc gst	Mon 19 July	4	9.30am - 11.30am	Elaine Collins	Mosman Campus
<b>NEW</b> The Versatility of Paper Crafts	\$175 inc gst	Sat 24 July	4	2.00pm - 4.30pm	Vivian Tse	Mosman Campus
Touch Typing for 12-16 Year Olds	\$120 inc gst	Tues 6 & Wed 7 Jul	2	1.00pm - 4.00pm	Margaret Delloso	Brookvale Campus
Zentangle	\$60 inc gst	Sun 18 July	1	10.00am - 12.00pm	Niki Lawrence	Mosman Campus

## Health Fitness Mind & Soul

Develop Your Intuition	\$212 inc gst	Thurs 26 Aug	4	10.00am - 1.00pm	Robyn McTigue	Brookvale Campus
<b>NEW</b> Eco Walk	\$145 inc gst	Sat 31 July	2	10.00am - 2.00pm	Alan Toner	Mosman/Chowder Bay
<b>NEW</b> ENLIVEN - Transformation through Movement, Breath and Sound	\$55 inc gst	Sat 17 July	1	9.30am - 12.30pm	Fiona Mackillop	Narrabeen Campus
Hula Hooping for Beginners	\$176 inc gst	Mon 19 July	8	6.00pm - 7.30pm	Kiri Pedersen	Tramshed Narrabeen
Hula Hooping Intermediate	\$176 inc gst	Mon 19 July	8	7.30pm - 9.00pm	Kiri Pedersen	Tramshed Narrabeen
Mindful Yoga	\$220 inc gst	Wed 21 July	8	4.00pm - 5.30pm	Kathy Penn	Warringah Bowls
Pilates	\$180 inc gst	Mon 19 July	8	6.00pm - 7.00pm	TBA	Warringah Bowls
	\$180 inc gst	Mon 19 July	8	7.00pm - 8.00pm	TBA	Warringah Bowls
	\$180 inc gst	Wed 21 July	8	6.00pm - 7.00pm	Joyce Subloo	Warringah Bowls
	\$180 inc gst	Wed 21 July	8	7.00pm - 8.00pm	Joyce Subloo	Warringah Bowls
Pilates - Daytime	\$212 inc gst	Mon 12 July	10	9.00am - 10.00am	Sonia Forato	Warringah Bowls
	\$212 inc gst	Mon 12 July	10	10.00am - 11.00am	Sonia Forato	Warringah Bowls
Qigong - The Art of Mindful Movement	\$150 inc gst	Tues 20 July	6	9.30am - 10.45am	Fiona Mackillop	Bilarong Reserve
Tai Chi	\$145 inc gst	Tues 20 July	8	9.00am - 10.00am	Rod Lee	Scots Kirk Mosman

See next page for Yoga.

For detailed information on our courses, including all materials lists and pre-requisites for studying via Virtual Classroom, visit: [nbmc.nsw.edu.au](http://nbmc.nsw.edu.au)



COURSE	COST	DATE	SESSIONS	TIME	TRAINER	LOCATION
Yoga For The Over 40s	\$225 inc gst	Wed 14 July	9	8.30am - 10.00am	Bernadette O'Donnell	Warringah Bowls
	\$225 inc gst	Thur 15 July	9	7.00pm - 8.30pm	Victoria Fisher	Scots Kirk Hall
Yoga For The Over 50s	\$225 inc gst	Mon 12 July	9	11.00am - 12.30pm	Bernadette O'Donnell	Warringah Bowls
	\$225 inc gst	Tues 13 July	9	10.00am - 11.30am	Bernadette O'Donnell	Warringah Bowls
	\$225 inc gst	Thur 15 July	9	10.00am - 11.30am	Bernadette O'Donnell	Warringah Bowls
	\$225 inc gst	Thur 15 July	9	12.00pm - 1.30pm	Bernadette O'Donnell	Scots Kirk Hall

## Locations

Name	Address	Details
Brookvale Campus	Level 1, 14 William Street, Brookvale	NO on-site parking - street parking available in nearby residential areas. Stairs - no lift access.
Cammeray Golf Club	Park Avenue, Cremorne	On-site parking available.
Forestville Community Arts Ctr	6 Darley Street, Forestville	On-site parking available.
Mackie Lane Community Garden	Mackie Lane (off Lang St), Mosman	Parking is available in Lang Street. A short walk from Spit Junction along Military Rd.
Mosman Campus	104/1-3 Gurrigal Street, Mosman	Parking is available at Bridgepoint Parking Station, Vista Street Car Park or Mosman Square Carpark. Small staircase (7 steps), with internal lift available.
Narrabeen Campus	1525 Pittwater Road, Nth Narrabeen	Limited parking available in northern end of main carpark - spaces line marked in pink only. Parking also available in Lake Park Road and car park opposite the College.
The Tramshed	1395a Pittwater Rd, Narrabeen	Parking available in Council car park next door (check parking restrictions).
Scotts Kirk Hall	9 Belmont Road, Mosman	Located near the pedestrian crossing in Belmont Rd, opposite the High School, down the pathway on the right of the Church.
St Lukes Hall	Hattersley Room, Heydon Street, Mosman	Parking available on Heydon Street or under Bridgepoint Shopping Centre. Disabled access available.
Warringah Bowling Club	74 Bradleys Head Rd, Mosman	Parking available on Bradley's Head Road or in the Club Carpark - entrance from Prince Albert Street

## Short Courses Enrolment Form (Pages 9 to 14)

This form is for short courses only. For Accredited/funded courses please contact the college.

FIRST NAME:	<input type="text"/>	LAST NAME:	<input type="text"/>	DATE OF BIRTH:	<input type="text"/> / <input type="text"/> / <input type="text"/>
ADDRESS:	<input type="text"/>			SUBURB:	<input type="text"/>
POSTCODE:	<input type="text"/>	MOBILE:	<input type="text"/>	HOME PHONE:	<input type="text"/>
*SENIORS CARD/PENSIONER/ FULL TIME STUDENT NO:	<input type="text"/>			*10% discount available on short courses. Excludes first aid courses, Computers for Over 60s, Tech Savvy Seniors.	
EMAIL:	<input type="text"/>				

### Course Details:

COURSE 1 NAME:	<input type="text"/>	START DATE:	<input type="text"/>
		TIME:	<input type="text"/>
		VENUE:	<input type="text"/>
COURSE 2 NAME:	<input type="text"/>	START DATE:	<input type="text"/>
		TIME:	<input type="text"/>
		VENUE:	<input type="text"/>
COURSE 3 NAME:	<input type="text"/>	START DATE:	<input type="text"/>
		TIME:	<input type="text"/>
		VENUE:	<input type="text"/>

### ENROLMENT OPTIONS:

**Online:** [www.nbmc.nsw.edu.au](http://www.nbmc.nsw.edu.au)

**Phone:** 9970 1000

**Cheques to:** Northern Beaches Community College

**In person:** 1525 Pittwater Road, North Narrabeen

### Payment Details:

COST 1:	\$ <input type="text"/>
COST 2:	\$ <input type="text"/>
COST 3:	\$ <input type="text"/>
-10% if eligible:	\$ <input type="text"/>
<b>TOTAL:</b>	\$ <input type="text"/>

For Terms & Conditions  
please go to our website:  
[www.nbmc.nsw.edu.au](http://www.nbmc.nsw.edu.au)  
or call: **9970 1000**.

### Credit Card Details: ☐ Visa ☐ Mastercard

Cardholder's Name:	<input type="text"/>
Credit Card Number	<input type="text"/>
Expiry Date	<input type="text"/> / <input type="text"/>
CVV	<input type="text"/>
Cardholder's Signature:	<input type="text"/>

Please post form to: NBMC Reply Paid, PO Box 1966, DEE WHY NSW 2099 (no stamp required)

# VET Training or Uni - Which is the right choice for you?



University can seem like a daunting and expensive commitment but did you know there are ways to try out your chosen subject, as well as reduce cost and time? By studying a VET Certificate/Diploma course with us you can:

- ☑ Decide if it is the correct career path for you before committing to a university degree;
- ☑ Work in the industry and earn money whilst you study;
- ☑ With some courses, use credits from your Certificate/Diploma course to reduce the amount of time and cost of your degree.

**FEE FREE\***  
eligible courses up to, and including, a Diploma for 16-24 year olds who have left school, working or not. Don't miss out, ends 30 Sep 21.

\*Eligibility conditions apply.

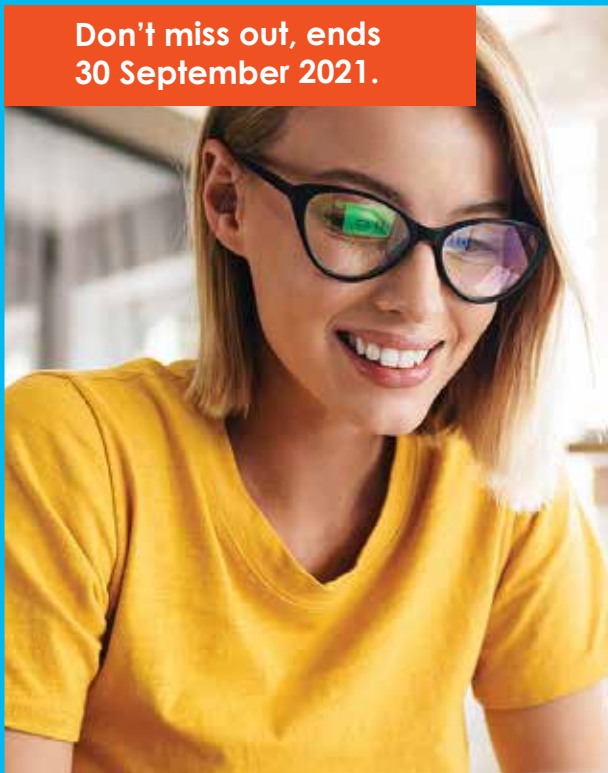
We offer courses in the following subjects which may offer a pathway to a variety of University Degrees.

- Accounting & Bookkeeping
- Ageing Support
- Business
- Community Services
- Counselling
- Early Childhood Education & Care
- Entrepreneurship & New Business
- Health Services
- Human Resources
- Individual Support
- Leadership & Management
- Leisure & Health

**Call us today to discuss how we can help you with your career path.**

**9970 1000**

**Don't miss out, ends 30 September 2021.**



## FEE FREE TRAINING


**Don't think you're eligible?  
You might want to check again.**

The NSW Government has announced a new training initiative, called **Skilling for Recovery (JobTrainer)**, which has a much broader eligibility criteria.

Are you:

- **Unemployed without any benefits;** or
- A **benefit recipient;** or
- **16-24 years old** and left school (working or not); or
- **New to a job** (less than six months); or
- **Employed** but don't hold a qualification higher than Certificate II.

You may be eligible to study up to, and including, a Diploma course **fee free**.

All courses in the brochure marked with an  symbol are eligible for the **fee free** training.

See page 8 or website for more details.

**Fee Free Workskills Courses - check website as updated regularly.**



**NORTHERN  
BEACHES  
& MOSMAN  
COLLEGE**

[nbmc.nsw.edu.au](http://nbmc.nsw.edu.au)

9970 1000

[enquiries@nbmc.nsw.edu.au](mailto:enquiries@nbmc.nsw.edu.au)

